

Drones and RDCK Parks and Trails Strategic Planning

Columbia Basin Trust Symposium

Inventory of Park and Trail Features



- Drones used to capture overlapping photos of 22 RDCK parks.
- Photos were stitched together to create 3D images and orthophotographs of each park.
- Park features like trails, fields, picnic areas, parking can then be manually digitized.

Multispectral imagery

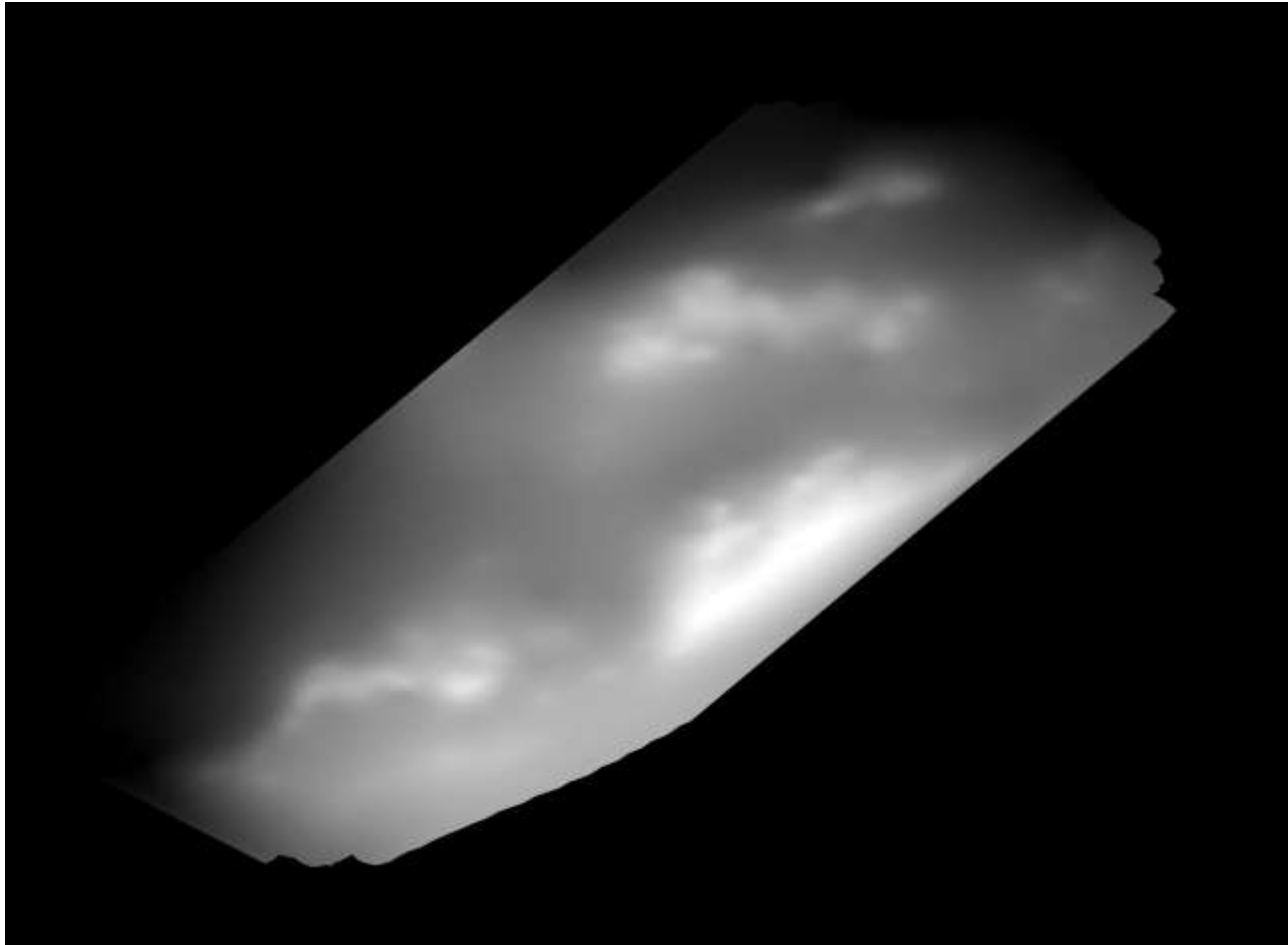
- We also collected multispectral imagery of some parks
- These data can be used to classify vegetation



Ortho-photograph



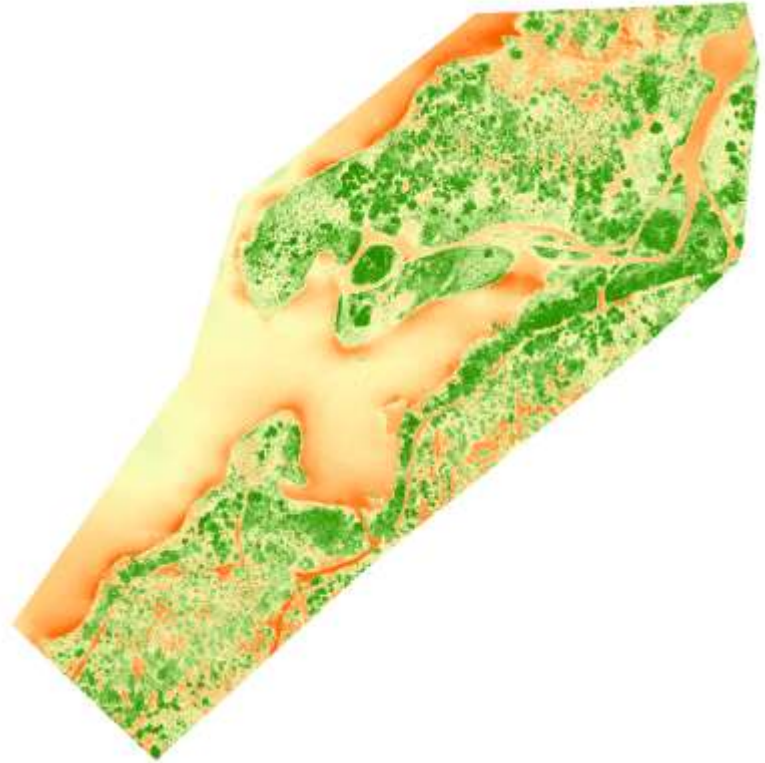
Digital Elevation Model



3D Model



Plant Health



Photographs and Videos

- As well as creating “technical” mapping products, we also collected promotional video and photography at several sites
- RDCK staff were so impressed with these that they asked us to spend additional time capturing photos & videos once the mapping products were completed

Questions?

JosephPlessis@edu.selkirk.ca